

Optimizer® Panel Dual Polarized Antenna, 790-960, 65deg, 15.7dBi, 1.3m, VET, 0-10deg

This antenna is an ideal choice for dense urban LTE800 and GSM 900 network optimization.

FEATURES / BENEFITS

- Continuously adjustable electrical downtilt from 0 to 10 provides enhanced precision in cell footprint.
- Quick and easy to adjust
- Upgradeable to remote electrical tilt
- Optimized suppression lobes allows strong tilt (typically 17dB)
- Effective polarization diversity ensured by high cross polar discrimination



Technical features

ELECTRICAL SPECIFICATIONS

Frequency Range	MHz	790-862	824-890	880-960
Gain	dBi (dBd)	15.2 (13.1)	15.4 (13.3)	15.7 (13.6)
Horizontal Beamwidth	deg	66	65	63
Vertical Beamwidth	deg	14.0	13.5	12.5
Electrical Downtilt Range	deg	0-15		
1st Upper Sidelobe Suppression	dB	>16		
Front-To-Back Ratio	dB	>25		
Polarization		Dual pol +/-45°		
VSWR		< 1.5:1, < 1.4:1, < 1.4:1		
Isolation between Ports	dB	>30		
3rd Order IMP @ 2 x 43 dBm	dBc	>150		
Impedance	Ohms	50		
Maximum Power Input	W	500		
Beamwidth Approximate	deg	65		
Frequency/Operating Band		Cellular (824-849, 869-894 MHz) Trunking/SMR (806-824, 851-869 MHz) GSM 900 (872-915, 917-960 MHz) 900 Trunking (896-901, 935-940 MHz)		
Antenna Type		Dual Polarized		
Electrical Down Tilt Option		Variable		

MECHANICAL SPECIFICATIONS

Lightning Protection		Direct Ground
Connector Type/Location		(2) 7-16 DIN Female/Bottom
Dimensions - HxWxD	mm (in)	1460 x 270 x 136 (57.7 x 10.51 x 5.35)
Weight w/o Mtg Hardware	kg (lb)	12 (26.44)
Survival/Rated Wind Speed	km/h (mph)	200 (125) / 150 (93.2)
Applied Wind Load Standard		DIN 1055-4
Wind Load @ Rated Wind, Front	N (lbf)	333 (74.5)
Wind Load @ Rated Wind, Max.	N (lbf)	416 (93.1)
Wind Load @ Rated Wind, Side	N (lbf)	204 (45.7)
Wind Load @ Rated Wind, Rear	N (lbf)	416 (93.1)
Mount Type		Downtilt
Height (Approximate)	ft.	5

TESTING AND ENVIRONMENTAL

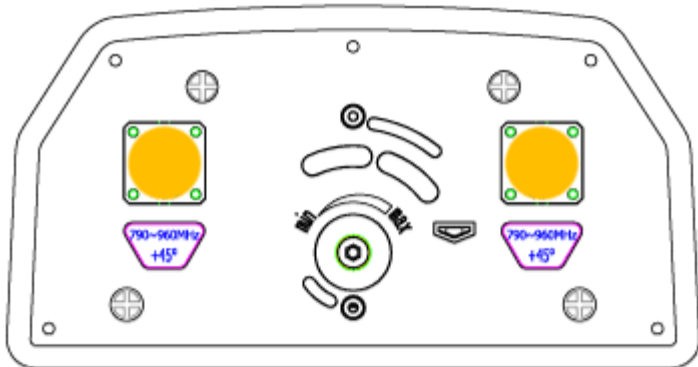
Operation temperature	°C (°F)	-40 to 60 (-40 to 140)
-----------------------	---------	-------------------------

MATERIAL

Radome Material/Color		UPVC/Light Grey RAL7035
Mounting Hardware Material		Included
Radiating Element Material		Aluminum
Reflector Material		Aluminum

ORDERING INFORMATION

Shipping Weight	kg (lb)	18.6 (40.9)
Packing Dimensions, HxWxD	mm (in)	1725x 380 x 230 (68.12 x 14.96 x 9.06)
Mounting Hardware		Included
Mounting Pipe Diameter	mm (in)	45 - 120 (1.7 - 4.7)
Mounting Hardware Weight	kg (lb)	4.3 (9.5)



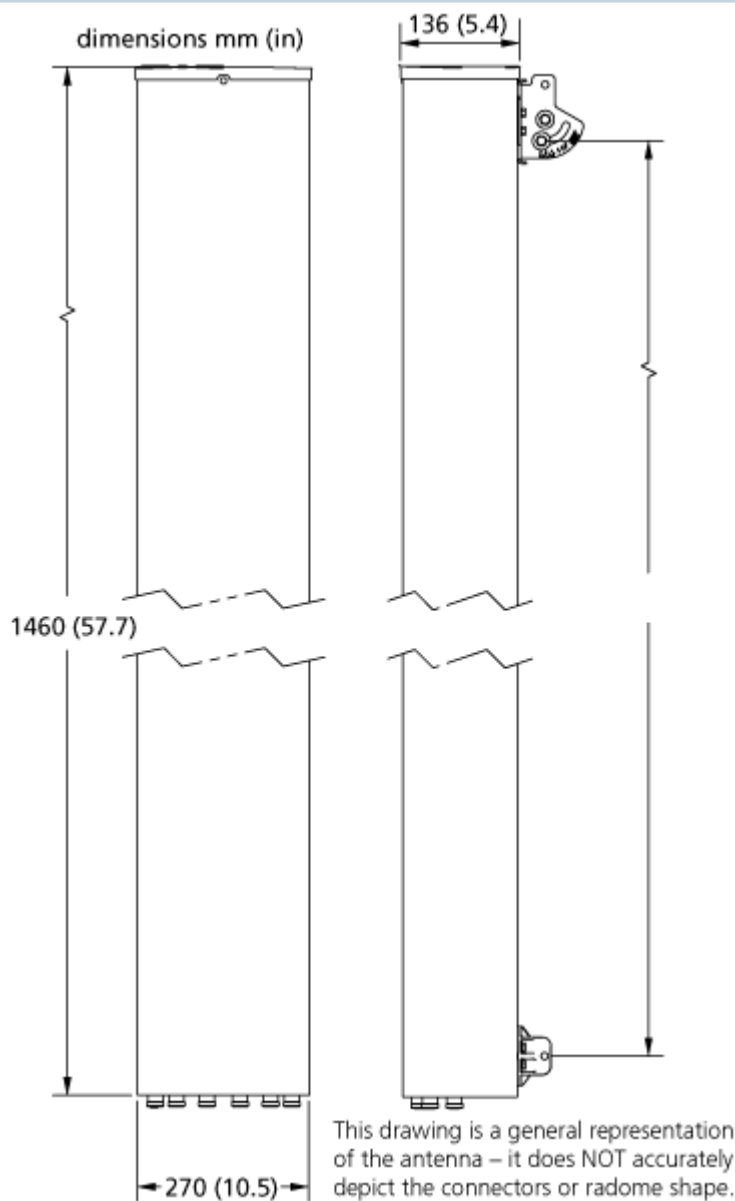
Antenna End Plate



Antenna Array

Discontinued product APXVE13-C

Optimizer® Panel Dual Polarized Antenna, 790-960, 65deg, 15.7dBi, 1.3m, VET, 0-10deg



Antenna Drawing

External Document Links

Notes

Available Configurations

- APXVE13-C — No ACU included
- APXVE13-C-A20 — (1) Pre-commissioned ACU included
- For additional mounting information please click "External Document Links" below.
-