

The N-TER*3800MHz Series are coaxial loads which operate from DC up to 3.8 GHz. The products are ideally suited for termination of unused ports in distributed antenna systems or in RADIAFLEX® radiating cables systems.

FEATURES / BENEFITS

- Ideal for all kind of DAS applications
- Finned termination for heat dissipation
- Low VSWR

NO IMAGE
AVAILABLE

Technical features

GENERAL SPECIFICATIONS

| | | |
|--------------------|--|--------|
| Product Type | | Load |
| Techn. Application | | Indoor |

ELECTRICAL SPECIFICATIONS

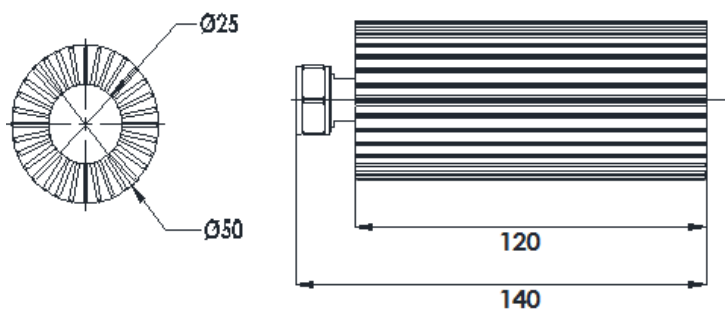
| | | |
|-----------------------------|---------|----------|
| Frequency Range | MHz | DC-3.800 |
| Impedance | Ohm | 50 |
| Max. VSWR / Return Loss, dB | VSWR/dB | /19 |
| Total Input Power | W | 20 |

MECHANICAL SPECIFICATIONS

| | | |
|----------------------|---------|------------|
| Input Connector Type | | N male |
| Diameter | mm (in) | 50 (1.97) |
| Length | mm (in) | 140 (5.51) |

TEMPERATURE SPECIFICATIONS

| | | |
|---------------------|---------|------------------------|
| Temperature Range | °C (°F) | -25 to 65 (-13 to 149) |
| Environmental Class | | Indoor |



[External Document Links](#)

[Notes](#)